

**PLAY** IN THE PARK  
CINCINNATI **HOUSE**

# ANNUAL REPORT

2020-21



OUR COMMUNITY  
**YOUR PLAYHOUSE**

# LETTER FROM OUR BOARD PRESIDENT

Dear Playhouse Friend,

It is said that “a friend in need is a friend indeed.” How true that has proven to be over the past year, my first as Board president of your Playhouse.

In the face of a global pandemic that shuttered our Marx and Rosenthal Shelterhouse theatres, you stepped up to ensure that playwrights, artists and the stories they collaboratively tell were available in a variety of virtual and socially distant settings. I cannot thank enough the 1,257 donors whose support of our annual fund made this possible.

Moreover, you also helped to bring our dream of a new, 21st-century theatre complex a giant step closer to reality. On June 5, we officially broke ground on The Rouse Theatre. Thus far, more than 1,000 individuals, foundations and companies have contributed to the Capital Campaign, with over 60 gifts of \$100,000 or more, a testament to the broad reach and generous spirit of the Playhouse family. But we’re not quite done! As we enter the final phase of our fundraising efforts, we ask for your continued support and advocacy. If you’ve not yet contributed, we hope you will do so. If you’re already a campaign donor, help spread the word among your family and friends. There’s still time to be a part of this transformational project!

The past year has arguably been the most challenging in the 61-year life of Cincinnati Playhouse in the Park. The Playhouse has successfully met this challenge, thanks largely to our history of strong financial stewardship. This is the legacy of Managing Director Buzz Ward, who stepped down from that role on June 30 after 29 years of extraordinary leadership. Thank you, Buzz. Your contributions to, and impact on, our theatre are immeasurable.

On behalf of the Playhouse Board of Trustees, I thank you all and look forward to welcoming you back to the theatre this fall.

Best,



A handwritten signature in black ink that reads "Ellen G. van der Horst".

**Ellen G. van der Horst**  
Board President

# LETTER FROM BLAKE AND BUZZ

Greetings!

What can we say other than THANK YOU! This has been a year unlike any other — one that we certainly didn't expect to play out as it did. But through it all, you, our Playhouse family, have stuck with us as we have learned how to navigate the “new normal” during a global pandemic. You have joined us for Zoom events and online mysteries, braved corn mazes with us, tuned in for pod plays and other art from home, supported online arts education activities for students around the Tristate, provided your generous support, and been a part of our careful reopening with our special event series in the Marx Theatre. As we look ahead to the return of productions to our stages next season, we want you to know how much we appreciate each and every one of you.

A year without live theatre has illuminated how much we as humans need to gather and share our stories with one another. When we return to the stage, our thoughtfully curated and well-rounded 62nd season of programming will continue to showcase a variety of perspectives and viewpoints. From popular musicals that allow you to share joy with those around you to groundbreaking new work that will spark important community dialogue, theatre is a medium that will help us rediscover our collective humanity as we begin to gather in person again.

On behalf of the entire staff, we look forward to celebrating with you — together at the Playhouse — this fall for the opening of *The West End* in the Marx Theatre. In the meantime, please know how grateful we are to all of you!



A handwritten signature in black ink, appearing to read 'Blake Robison'.

**Blake Robison**  
Artistic Director



A handwritten signature in black ink, appearing to read 'Buzz Ward'.

**Buzz Ward**  
Managing Director

# CONTINUED IMPACT IN YOUR COMMUNITY

Each year, ArtsWave raises millions of dollars to support more than 100 arts and community organizations across our region. Through their Blueprint for Collective action, a strategic plan for creating community through the arts, they work through five focus areas to make our region an amazing and vibrant place to live. The Playhouse is proud to partner with ArtsWave to deepen this investment in our community — especially during the pandemic, restrictions on gatherings and stay-at-home orders during the 2020-21 season.

Thanks to the support and resources provided by ArtsWave while our stages were dark, we were able to draw upon the profound power of the arts to keep our community connected and spread joy in the midst of uncertainty.



## ARTS DEEPEN ROOTS

**36** Off the Grid activities.

**1,195** people reached.

**70** local artists and teaching artists hired.

## ARTS FUEL CREATIVITY AND LEARNING

**41,455** students participated in all education and community engagement programs.

**3** outreach tour virtual productions. **103** virtual performances.



**197** HOURS

of recorded drama workshop videos.

Teaching Artist Julia Gomez reads *Go, Dog, Go!* during a Bringing Books to Life virtual workshop.



**45** GREATER CINCINNATI CLASSROOMS

received a free Education Membership.

Teaching Artists Craig Branch and Ariana Moses during a virtual Drama Club workshop.



## ARTS PUT CINCINNATI ON THE MAP

**5** new play commissions in progress.



## ARTS BRIDGE CULTURAL DIVIDES

**3** *Upstanders Onstage:*

*Performances for Social Change*

events performed to a total of

**215** audience members and featured **20** artists using their art to create dialogue and effect change in the world.



The Playhouse was one of **24** theatres across the country to partner with The Breath Project; **3,600** people nation-wide participated.

## ARTS ENLIVEN NEIGHBORHOODS

**3** virtual Off the Hill productions.

**35** community partners.

**9,814** estimated viewers.



# COMMITMENT TO DIVERSITY, EQUITY, INCLUSION AND ACCESS (DEIA)

Our theatre is a community gathering place where we seek to illuminate the human experience. We celebrate differences and lift up our shared humanity. The Playhouse recognizes the injustices and inequities that underpin our city and our nation. We stand with the Black community and communities of color, and with the diverse artists who make art in our city.



## WE WELCOME

**ALL** RACES AND ETHNICITIES

**ALL** RELIGIONS

**ALL** GENDER IDENTITIES

**ALL** COUNTRIES OF ORIGIN

**ALL** SEXUAL ORIENTATIONS

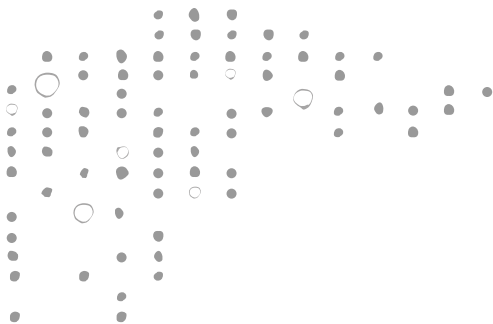
**ALL** IMMIGRANTS

**ALL** ABILITIES AND DISABILITIES

**ALL** SPOKEN AND SIGNED LANGUAGES

**EVERYONE.**

**PLAY** IN THE PARK  
CINCINNATI **HOUSE**



## AN UPDATED PLAN

In pursuit of the above commitment, Playhouse leadership, staff and Board revisited our DEIA plan this season, which was originally made public and official in 2018. After measuring current benchmarks, we used discussion forums, conversations and surveys to carefully listen to various stakeholders, artists, audiences and community members. The resulting, updated commitment and action items can be found at [cincyplay.com/DEIA](http://cincyplay.com/DEIA). The action items reflect goals for programming, audience, outreach and all who are connected with the Playhouse — management, staff, trustees, volunteers and vendors. Work on these action items has already begun, including the first round of DEIA trainings for our staff and Board, which were held in the 2020-21 season.



# PARTNERING WITH THE BREATH PROJECT

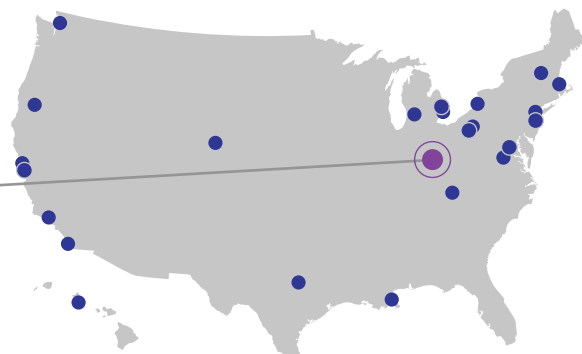
This season, we were proud to partner with The Breath Project to create a national archive of 8-minute-and-46-second works from multidisciplinary theatre artists of color. The archive acts as a living time capsule and a tool for teaching and advocacy. The Playhouse worked with The Breath Project's co-founder and artistic director, Gamal Abdel Chasten, who performed in our 2020 world premiere *americUS*.

A selection of works was curated from the archive into a virtual festival, held online Oct. 24 and 25, 2020. It featured **24** world premieres, and **3,600** people participated nationwide.

The Playhouse was one of **24** theatres across the country to partner with The Breath Project through creative input, outreach and artistic resources.

"Theatre has the incredible power to heal and bring people together. We believe the powerful pieces being presented by BIPOC artists as part of this virtual festival should be seen by everyone. We were excited that the work of some very talented Cincinnati-based artists, who have Playhouse connections, were included."

— Piper N. Davis, The Breath Project's Cincinnati-based curator



For more information on The Breath Project, visit [thebreathproject2020.com](http://thebreathproject2020.com)

# PRESENTING A CHRISTMAS CAROL: A RADIO PLAY ON WVXU

SPONSORED BY 



Bruce Cromer in  
*A Christmas Carol*  
by Mikki Schaffner.

The Playhouse's annual performance of *A Christmas Carol* is a Cincinnati holiday tradition that's lasted 30 years. Due to the challenges posed by the pandemic in 2020, we had to make the difficult decision to cancel the live, in-person production of this enduring classic. But through some hard work, creative thinking and a little bit of Christmas magic, we re-imagined our annual telling of Charles Dickens' tale and proudly brought a one-man radio broadcast to the comfort of homes around the Tristate this past holiday season.

Actor Bruce Cromer — who has performed in the Playhouse's production of *A Christmas Carol* for 22 years and has starred as Ebenezer Scrooge since 2005 — brought Dickens' classic story to life in a collaboration with Cincinnati's WVXU-FM radio station. On Dec. 23 and 24, Cromer performed a tour-de-force reading of Dickens' novella to thousands of listeners. The broadcast was met with raves and appreciation from fans.

This special presentation was made possible by a generous sponsorship from our friends at Macy's, who have been a title sponsor of our special matinee performance for students since 1991. We were overjoyed to partner once more in providing thousands of households across the Tristate with access to this cherished tradition. The experience would not have been possible without Macy's steadfast support.

Audiences can still access the recording of *A Christmas Carol: A Radio Play*, for free, on the WVXU website and at [cincyplay.com/carolradio](http://cincyplay.com/carolradio).



Shannon Kapp  
@skapp5

Thank for @917wvxu and @CincyPlay for #AChristmasCarol beautifully spoken and broadcast. What a wonderful opportunity to gather as a family and enjoy the spoken theater!

9:01 PM · Dec 23, 2020 · Twitter for iPhone



Rebecca Bromels  
@RebeccaBromels

How delightful to have Bruce Cromer's voice coming out of my radio, performing A Christmas Carol. Thanks @CincyPlay and @917wvxu

8:03 PM · Dec 23, 2020 from St Bernard, OH · Twitter for iPhone

# INVESTING IN BRAND NEW STORIES

New work has always been a cornerstone of Playhouse programming, bringing world premiere productions to life onstage and making it possible for acclaimed playwrights to create brand new work for our stages. Recent successful productions the Playhouse both commissioned and premiered include *americUS* by Universes, *Cincinnati King* by KJ Sanchez and *Native Gardens* by Karen Zacarías. Before its cancellation, the 2020-21 season was set to feature two commissions: Deborah Zoe Laufer's *Rooted* and Keith Josef Adkins' *The West End* — now scheduled for the 2021-22 season.

This season, with stages dark, Artistic Director Blake Robison was able to spend more time working with Playhouse-commissioned playwrights on their original works-in-progress. It was a silver lining, of sorts, to have time to nurture the stories so that they're pitch-perfect for Cincinnati audiences.

"We were not just treading water. There has been a lot of work happening in preparation for the post-pandemic era," said Robison. "Look at these commissions that we're lining up, look at these great stories we're planning to tell. We're taking the time to invest in playwrights and new plays very seriously."

## CURRENTLY COMMISSIONED PLAYWRIGHTS:



**Keith Josef  
Adkins**

*The West End*



**Nathan Alan  
Davis**

Title TBA



**Deborah Zoe  
Laufer**

*Rooted*



**Theresa  
Rebeck**

*The Scarlet Letter*



**Karen  
Zacarías**

*Shane*

We published an in-depth article about the process of a commission in our *Prologue* publication and on our website at [cincyplay.com/new-stories](https://cincyplay.com/new-stories).

Playhouse commissions are made possible by the Jerome Fey Endowment for New Plays. The funding provided not only pays a playwright to write a new play, it also allows for the readings, workshops and script development necessary to prepare it for full production. Then, the commissions are brought to life as world premieres with support from The Rosenthal Family Foundation and The Harold & Mimi Steinberg Charitable Trust. Many of these plays have gone on to numerous subsequent productions around the country.

# KEEPING STUDENTS AND FAMILIES ENGAGED

Theatrical productions and school enrichment workshops designed specifically for children and families are integral to the Playhouse's annual programming. When we had to cancel our in-person educational programming, we reimagined our traditional content to provide creative outlets and meet the needs of students and their families.

## SUMMER THEATRE CAMP AND PERFORMANCE ACADEMY, JUNE 2021

After offering virtual summer camp in 2020, we returned to in-person summer camps this year, held both at the Playhouse and in Mason. In June, **211** young people ages 6 to 17 explored fantastical worlds, storybook lands, our favorite books and movies, and so much more.

## ACTING CLASSES, WINTER 2020-21

Like our summer camps, our acting classes for young people ages 5 to 14 aim to build confidence, strengthen their communication skills and develop a sense of community, all while having fun! This season we offered two courses:



WIZARDING  
WORLD

**8** children (grades 3-6)  
attended **3** virtual sessions  
and **5** in-person sessions.



MUSICAL  
THEATRE

**8** children (grades 5-8)  
attended **4** virtual sessions  
and **4** in-person sessions.

## VIRTUAL ENRICHMENT WORKSHOPS

To provide essential arts education programs during the pandemic when students needed creative outlets more than ever, the Playhouse recorded and shared over **197** hours of videos of drama workshops and activities. Education Memberships, provided free of charge to **45** Greater Cincinnati classrooms, gave teachers and parents access to a virtual video catalog and supplemental academic resources. We now have a full and growing library of content that teachers and parents can access depending on their students' unique needs and interests that will remain available after we return to in-school activities.



### WORKSHOPS

- Grades K-2**  
13 Bringing Books to Life
- Grades 3-6**  
10 Dramatic Interpretation  
8 Public Speaking
- Grades 6-12**  
9 Dramatic Interpretation  
7 Public Speaking
- All Grades**  
4 Enrichment Day  
17 Drama Club  
8 Read Aloud

Education programming and touring plays supported by:  
**THE ROBERT AND ADELE SCHIFF FAMILY FOUNDATION, LINDA AND GARY GREENBERG, GRADISON FOUNDATION, THE CHARLES H. DATER FOUNDATION, THE P&G FUND OF THE GREATER CINCINNATI FOUNDATION and THE JOHN A. SCHROTH FAMILY CHARITABLE TRUST.**



2021 Summer Camp



Teaching artist  
Candace Handy

Amanda Klare, NBCT  
@klarebeechwood

This week @beechwood\_tiger 4th and 5th graders got to virtually collaborate w/ @CincyPlay! What a fun way to meet some of our academic standards and bring in the arts at the same time!



Mrs. Gasser's Class and Toby Parton



# OUTREACH TOURING PLAYS

Each year, the Playhouse partners with schools, community arts centers and other community venues to bring three plays “off the hill” to students and families throughout the Greater Cincinnati area.

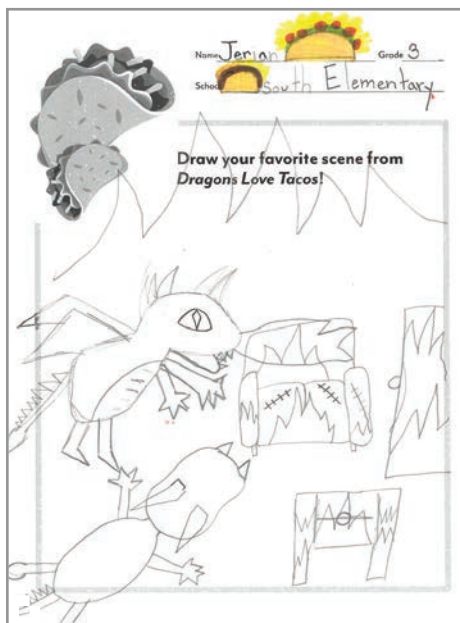
This season, we went virtual with professionally filmed productions of *The Wind in the Willows*, *The Snowy Day and Other Stories by Ezra Jack Keats* and *Dragons Love Tacos*. We are grateful to Optic Lizard Productions — a Cincinnati-based photography and videography company — whose generosity, talent and hard work made filming possible!

Accessibility has remained a goal of our education programs; we were thrilled to offer American Sign Language (ASL) versions of all our Outreach Tour productions to schools and communities alike.



**Ms. Poe**  
@MsAllisonPoe

Thanks to @CincyPlay for offering a free virtual performance of *The Snowy Day*. We just read it in our previous unit so it tied perfectly into our class! 😊 It was fun to watch and since we just had a lot of snow, the Ss made great connections. @MilfordOnline #milfordmeansall



**Hamilton Co. Developmental Disabilities**  
@HamiltonDDS

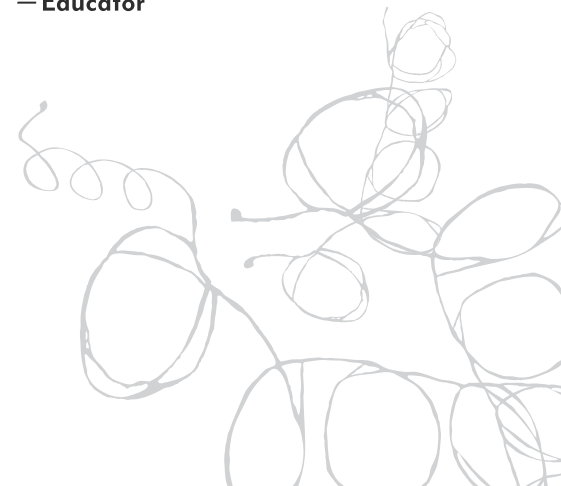
Thank you, @CincyPlay, for the virtual performance for Bobbie B. Fairfax students! Everyone enjoyed it 😊

2:52 PM · Nov 24, 2020 · Buffer

1 Like

“We had the absolute best time. Our students and families loved the performance. We commend the actors on their performances and the Playhouse on safety measures taken. We thought the gloves and masks were so creative and cute!”

— Educator



# GO OFF THE GRID — WITH THE PLAYHOUSE!

This season, we went Off the Grid with our YP engagement program by hosting outdoor adventures and socially distant film screenings, programming virtual interactive mysteries, and commissioning artists to pursue new forms of storytelling for our audiences.

## POD PLAYS

The Pod Plays project makes creative use of technology, storytelling and outdoor space. Each play is an audio-based story that users can download for free and listen to through their cell phone or tablet. They're designed specifically to unfold like the popular radio dramas of the 1930s and '40s. Listeners are guided through the designated outdoor space as the story unfolds, interacting with the same views, spots and markers as the characters in the streaming audio story.



### THE AVIATORS

Written by Trey Tatum

Location: Alms Park

Kaylan and Cece explore Alms Park and all of its hidden gems while working on a project about flight and the history of aviation.



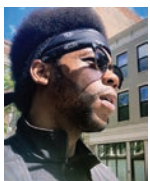
### RICHIE AND BLANCHE

Written by Isaiah Mikel-Reaves

Location: Purple People Bridge

A mother and son reunite after five years of estrangement on the Purple

People Bridge and take in the beautiful sites and views of the Ohio River and Cincinnati Skyline.



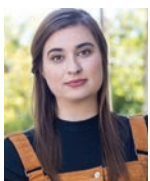
### THE EDGE OF TOWN

Written by Deuces II

Location: Wyoming, OH

*The Edge of Town* is the story of a Black male as he navigates this world and

searches for truth and hope by reflecting on the past, present and future. His journey includes walks through downtown Wyoming and along Oak Street and a visit to the City building, which once housed the African American School.



### AKIN

Written by Carolyn Guido Clifford

Location: Eden Park

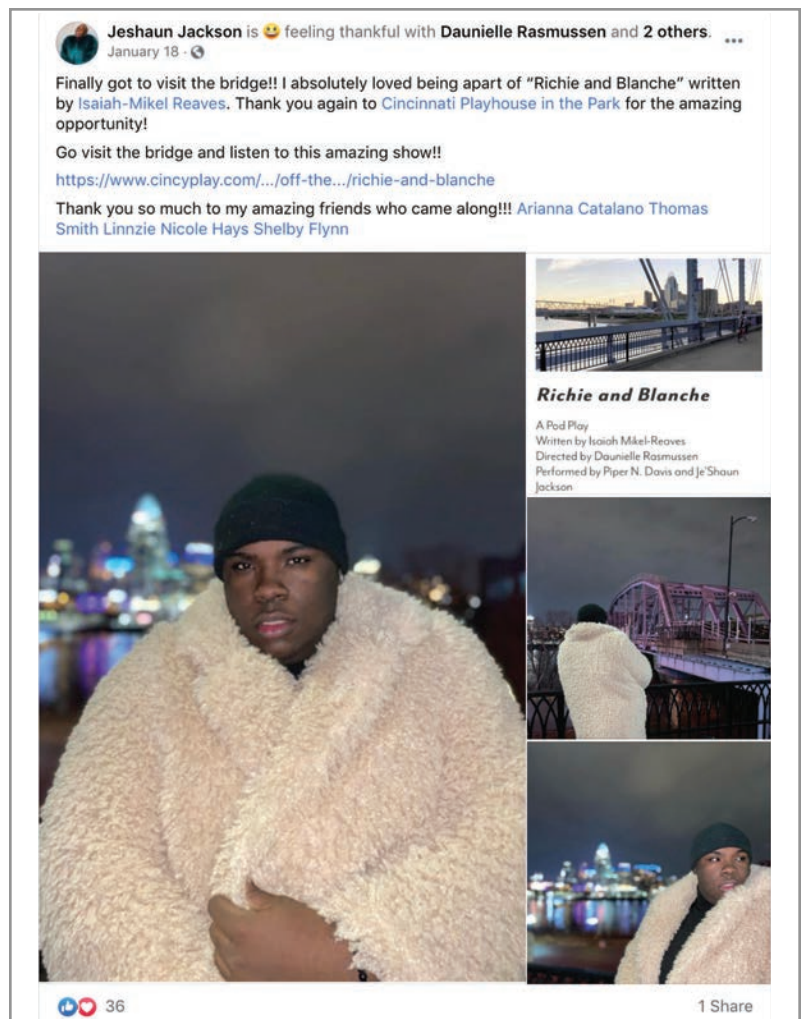
A young woman undergoes an unexpected change and must relocate to Cincinnati to live with her aunt, and Eden Park

plays a key role in the development of their relationship.

Off the Grid program supported by:



THE WILLIAM BAUDE-MAURICE OSHRY FUND  
OF THE GREATER CINCINNATI FOUNDATION



## CHILDREN OF THE CORN MAZE

Written by Trey Tatum | Saturday, Oct. 24

Burger Farm and Garden Center

With fun nods to horror and thriller favorites from Stephen King to *Ghostbusters*, a twisted tale unfolded as audiences walked the haunted trail in this immersive, theatrical experience. Participants set out on 45-minute tours in groups of 10, and the festive event also featured a Kids Pumpkin Party for children ages 4 to 12 with Halloween-themed movies and arts and crafts activities.

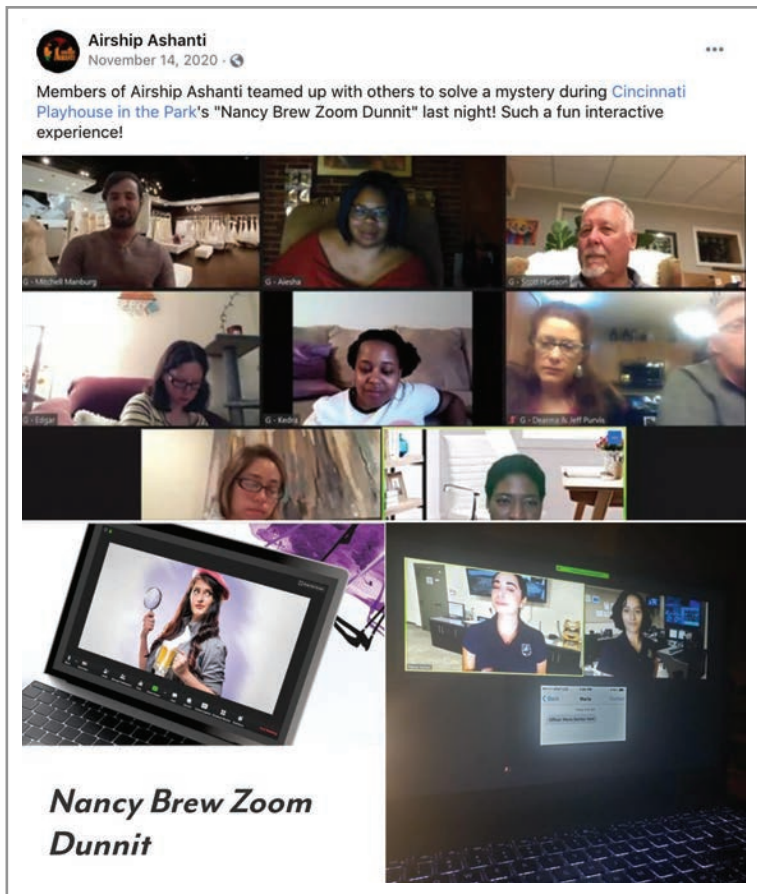


## NANCY BREW ZOOM DUNNIT

Written by Margot H. G. Manburg

Nov. 12 and 13, Feb. 17, 18, 19 and 20

Who doesn't love a good mystery? In this interactive whodunnit hosted via Zoom, armchair detectives logged in from home to track down the culprit of a crime. Participants broke out into teams, observed scenes, tracked clues and interacted with characters to solve a mystery, virtually.



## SHADOWCAST SERIES

*Dreamgirls*: Thursday, Oct. 1

*Harold & Kumar Go to White Castle*: Thursday, Dec. 3

*Girls Trip*: Thursday, Feb. 4

*Mean Girls*: Thursdays, April 1 and April 8

Shadowcast film viewings feature actors reenacting cult classic films in front of an audience as the movie played on the big screen behind them — a la *Rocky Horror Picture Show*. This season, the Playhouse hosted a series of socially distanced, shadowcast events of fan-favorite movies at the Mariemont Theatre.



*Dreamgirls* Shadowcast event.



*Dreamgirls* Shadowcast event.

# THE RETURN OF IN-PERSON PERFORMANCES!

This spring, the Playhouse was thrilled to welcome audiences back into the Marx Theatre — with socially distanced seating — for a series of performances featuring nationally recognized theatre artists. Thank you to Schueler Group for making this special event series possible through their sponsorship.

SPECIAL EVENT SERIES  
PRESENTED BY



## HIGHER AND HIGHER: A ROCK 'N SOUL PARTY WITH CHESTER GREGORY

April 30 – May 4

Sponsored by DIGI AND MIKE SCHUELER

Broadway star and recording artist Chester Gregory electrified audiences with his remarkable talents, lending his voice to the music of Sam Cooke, Otis Redding, James Brown and more.



Blake Robison welcomes the socially distanced crowd.



Our Patron Services staff.

“It was a great experience from the beginning to the end. The welcoming of the staff who shared a sincere genuine, ‘Welcome back’ made such a difference it was true HOSPITALITY!” — *Patron Survey*

“Loved every minute! Thank you for the welcome at the door and upon entering the theatre...Last night was a reminder of how you do such a great job of making every guest feel like family. Can’t wait to come back!!” — *Patron Survey*

**Donna Palmatary**  
The show was wonderful, and I appreciated the stories Chester shared about his big break and how the message in earlier music rings true today, unfortunately not necessarily in a good way. I am glad he felt comfortable speaking out through the music he shared. It was great being back in the theatre! Thank you!!  
Like · Reply · 9w

**Karen Wells**  
Fantastic show. There is nothing that compares to a live performance. I actually got a bit emotionally at the start. It has been too long. Well done by all. Performers were outstanding. Playhouse staff provided a welcoming safe venue. And the audience was appreciative and followed the rules.  
Like · Reply · 9w

**Carla Foster-Lamadore**  
I was Sooo glad to be back viewing theater.  
Like · Reply · 9w

**Judy Russell**  
Absolutely fantastic show! It was so good to hear live music again. I teared up a few times having missed the experience so much. Thank you Chester Gregory and the entire Higher and Higher band, and thank you Playhouse in the Park for making live entertainment possible again!  
Like · Reply · 9w

**Vicky Mary**  
It was wonderful to be in a real theatre. The staff did such a great job. And the show was good music, good fun.  
Like · Reply · 9w

## THE SKIVVIES: LIVE AND LITERALLY IN-PERSON!

May 26 and 27

Lauren Molina and Nick Cearley, singer/actor/musicians who are known for their comedy-pop, “undie”-rock, delighted audiences by performing stripped down arrangements of eclectic covers and eccentric originals. But, not only was the music stripped down — cello, ukulele, glockenspiel, melodica — the Skivvies literally stripped down to their underwear to perform!



Nick Cearley and Lauren Molina are The Skivvies.

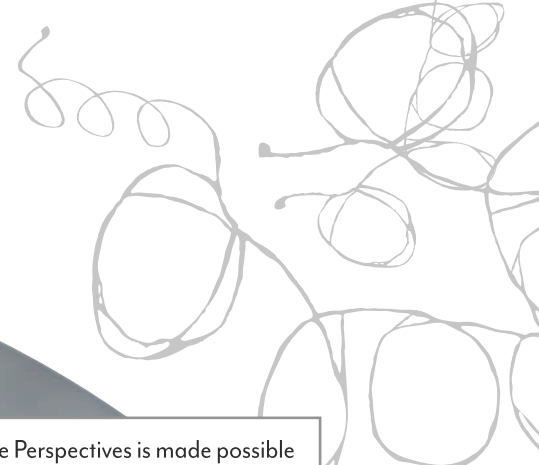
## AN EVENING WITH THE BENGSONS

June 25 and 26

Married folk-rock duo The Bengsons presented a collection of their songs in this entertaining concert-style, theatrical memoir.



# UPSTANDERS ONSTAGE: PERFORMANCES FOR SOCIAL CHANGE SERIES



Playhouse Perspectives is made possible  
by a generous grant from  
**RODERICK AND BARBARA BARR.**

**UPSTANDER:** an individual who stands up for others and their rights. They fight against injustice and unfairness, and they use their character strengths to inspire action and become the best of humanity today. They are willing to sacrifice. Anyone can be an upstander, and now is the time to be one.

To learn more about the Upstanders Project, visit [holocaustandhumanity.org](http://holocaustandhumanity.org).

Deuces II

The Playhouse partnered with The Nancy & David Wolf Holocaust & Humanities Center (HHC) and Cincinnati Music Accelerator to present *Upstanders Onstage: Performances for Social Change*. Presented as part of the Playhouse's Perspectives series and in conjunction with the HHC's Cincy Upstanders Project, this outdoor series of events was held in the parking lots of Cincinnati Museum Center at Union Terminal, Cincinnati Art Museum and the Mayerson JCC over the course of three evenings in May.

A total of **215** attendees gathered for these live, outdoor events featuring an eclectic mix of scenes, monologues, spoken-word poetry and music performances by **20** local theatre artists, musicians and poets who are using their art to create dialogue and effect change in the world.

During each performance, artists encouraged audience members to join in by singing or adding call-and-response, host Piper N. Davis helped to provide deeper context for each piece, and by the end of each evening audiences were dancing in their seats. Attendees were also encouraged to participate in interactive activities via their phones, which included creating vision statements, identifying perceptions, and choosing activities to continue the work of being an upstander into the future.



Cincinnati Music Accelerator



Siri Imani



Socially distanced audience at Upstanders performance

# BUZZ WARD BECOMES MANAGING DIRECTOR EMERITUS



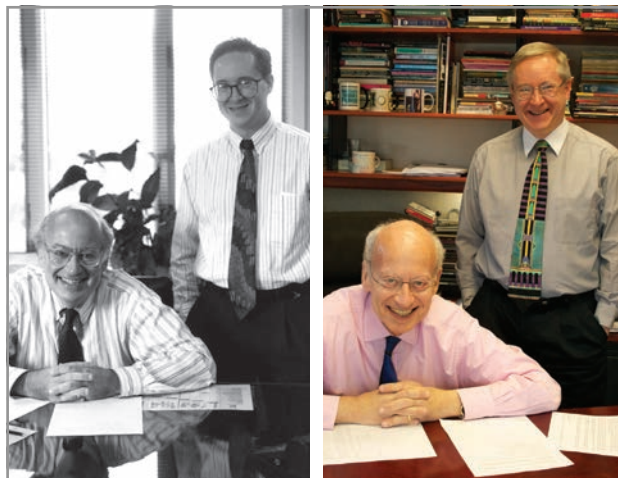
Managing Director Buzz Ward has had an unprecedented and incredible 29-year tenure leading Cincinnati Playhouse in the Park. As the longest serving executive in the Playhouse's history, much of the theatre's ongoing success can be attributed to him — having managed it for nearly half its 61 years. He has presided over 29 consecutive seasons with an operating surplus — an unrivaled record in the American regional theatre — that has resulted in the financially strong organization the Playhouse is today. During his time, he oversaw the production of over 300 mainstage shows, and the theatre won two Tony Awards: the first

in 2004 for Best Regional Theatre and the second in 2007 for Best Revival of a Musical for *Company*. In 2012, he was awarded the Governor's Award for the Arts in Arts Administration.

Buzz arrived at the Playhouse in 1992. He served as Executive Director under the late Producing Artistic Director Ed Stern until 2012. He was then named Managing Director and Co-CEO with the arrival of current Artistic Director and Co-CEO Blake Robison. At the end of June, Buzz retired from his role as Managing Director and transitioned into the Playhouse's first-ever Managing Director Emeritus.

"Nobody can replace Buzz. His keen financial skills and visionary leadership have brought national acclaim to the organization," says Robison.

Thank you, Buzz, for serving Cincinnati audiences with remarkable work, enriching our artistic community and making significant contributions to the American theatre!



Producing Artistic Director Ed Stern with Buzz Ward in 1992 and in 2012.

# BOARD OF TRUSTEES

## 2020-21 FISCAL YEAR

**Ellen G. van der Horst**, President      **Digi Schueler**, Vice President  
**James C. Leonard**, Treasurer      **Austin Schiff**, Secretary      **Woody Taft**, Chair

### TRUSTEES

Ronald T. Bates	Richard P. Homan	Jenny Powell
Mono Bhattacharya	Peter Horton	Matt Reckman
David Billmire	Holly Huttenbauer	Robert C. Reifsnnyder
Douglas Brauch	Susan Ingmire	Jack Rouse
Ryan L. Brown	Thomas M. Keckeis	Jerry Shroat
Robert S. Castellini	Terry Lemmerman	John Stein
James P. Conway, Jr.	Stephen S. Lett	Joseph B. Steiner
Alva Jean Crawford	Jacqueline Mack	Marty Tomb
Mark Dawes	Kevin N. McMurray	Lawrence N. Vignola
Scott X. Deters	Roy A. Mitchell	Al Vontz III
Peter A. Draugelis	Dean Moulas	Jill A. Warman
Louis A. Fender	Patti Myers	Barbara Weyand
Elizabeth George	Jack D. Osborn	Susan Whitman
Linda Greenberg	Kenneth Oswald	Leo T. Whitt
Nirvani Head	Sara Phillips	Ronna Willis
Andrea A. Herzig		Susan B. Zaunbrecher

### EMERITI

Otto M. Budig, Jr.	Morse Johnson
Charles O. Carothers, M.D.	Lois Rosenthal
David C. Herriman	Howard Tomb
Andrew MacAoidh Jergens	Albert W. Vontz, Jr.

## WHO WE ARE

Cincinnati Playhouse in the Park is our region's preeminent professional theatre.

## WHY WE'RE HERE

We tell stories that entertain, engage, inspire, challenge and connect our audiences.

## WHAT WE BELIEVE

We are passionate leaders in the advancement of the arts.

We believe audiences deserve productions that are both artistically bold and wildly entertaining.

We create dialogue that resonates with our community and inspires others to join the conversation.

We warmly welcome audiences from all backgrounds, cultures and walks of life to our shows on and off the hill.

We are exuberant ambassadors of our craft, our colleagues and our organization.

# CAPITAL CAMPAIGN AND GROUNDBREAKING



Photos by Messer Construction.

## A THEATRE FOR EVERYONE

The Playhouse is in the midst of constructing a new, state-of-the-art mainstage theatre and creating a premiere theatre complex to achieve the following goals:

ENHANCE THE PATRON EXPERIENCE	INCREASE ARTISTIC CAPABILITIES	GROW AUDIENCE AND DEEPEN IMPACT
<ul style="list-style-type: none"> <li>• Increased accessibility</li> <li>• Comfortable seating with more legroom</li> <li>• Optimal stage views</li> <li>• Improved entrance, exit and parking</li> </ul>	<ul style="list-style-type: none"> <li>• Upgraded production facilities</li> <li>• Modern technology</li> <li>• Attract nation's top talent</li> <li>• Develop co-productions and tryouts of Broadway-bound productions</li> </ul>	<ul style="list-style-type: none"> <li>• Attract new and diverse patrons</li> <li>• Expand space for educational programs</li> <li>• Expand theatrical partnerships nationwide</li> </ul>

## COMPLETING THE VISION

- **\$49.9** million dollar goal
- Over **1,000** campaign donors
- Over **60** donors have given gifts of **\$100,000** or more

## BUILDING AN ICONIC COMPLEX

Site work has finished on the new complex and the official groundbreaking ceremony was held in June 2021.

The project budget is currently at \$49.9 million:



PROJECT BUDGET	
Construction & Architect Costs	\$46,786,000
Financing & Fundraising Costs	\$2,626,000
Transition Expenses	\$500,000
<b>Total</b>	<b>\$49,912,000</b>



## EXPANDED IMPACT

The Playhouse's new theatre complex will ensure Cincinnati's place as a leading national arts and cultural destination and provide key benefits for our broader community.



**ECONOMIC IMPACT\*** – \$97.7 million in positive economic impact over 50 years; \$2 goes to the community for every \$1 spent on the project.



**COMMUNITY CONNECTION** – New building will be inclusive and accessible inside and out.



**NATIONAL RECOGNITION** – Enable Broadway producers to try out Broadway-bound shows at the Playhouse before they move to New York City.

\*Study completed by the University of Cincinnati Economic Center.

## CONSTRUCTION MILESTONES



## GROUNDBREAKING - JUNE 5



Hardhats and shovels to break the ground at our Groundbreaking Celebration.



Lead Donors Moe and Jack Rouse break ground.



Attendees signed a beam that will be in The Rouse Theatre.



Playhouse Artistic Director Blake Robison with Board Trustees Austin Schiff and Al Vontz III at our Groundbreaking Celebration.



Playhouse Managing Director Buzz Ward, Capital Campaign Co-Chairs Rob Reifsnnyder and Woody Taft, Board Trustee Jerry Shroat, Lead Donor Jack Rouse, Board President Ellen G. van der Horst and Director of Development Bethany Doverspike at the Groundbreaking Celebration.



Capital Campaign Co-Chair Woody Taft speaking to attendees at our Groundbreaking Ceremony.

## LEADERSHIP DONORS

**MOE AND JACK ROUSE**

**THE ROSENTHAL FAMILY FOUNDATION**



**THE ROBERT AND ADELE SCHIFF FAMILY FOUNDATION**

**DIGI AND MIKE SCHUELER**

**THE TAFT FAMILY**

Carol Ann and  
Ralph V. Haile, Jr.  
FOUNDATION

**THE LEMMERMAN FAMILY**

**PROCTER & GAMBLE**

**MARGARET AND ALBERT VONTZ III**

**LKC FOUNDATION**



**THE HAROLD C. SCHOTT FOUNDATION**

**BARBARA WEYAND**

# CAPITAL CAMPAIGN DONORS

## THANK YOU FOR YOUR SUPPORT

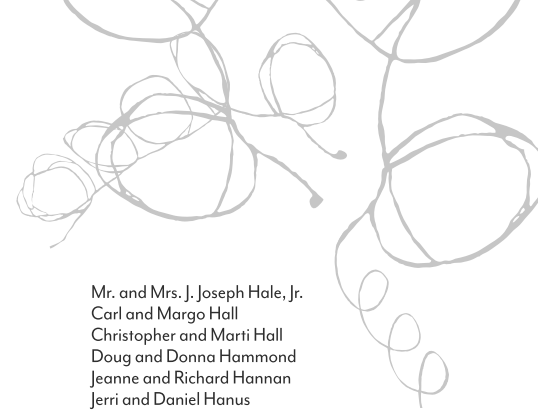
This list includes gifts of \$500+ given to the Capital Campaign through July 30, 2021.

Anonymous (38)  
Pat and Jack Adams  
Richard and Virginia Adams  
Gordon Allen  
Raye Allen  
Alpaugh Foundation  
Peter and Vicky Alpaugh  
Janice and James Amatulli  
Dr. Victor and Dolores Angel  
Martha Anness  
James Anthony and Sarah Corathers  
John and Bridget Anthony  
Tom and Susan Anthony  
Yousef Aouad  
Carol N. Aquino  
Patricia J. Armstrong  
Atkins & Pearce Inc.  
Bruce and Helene Ault  
Ricki and Gerald Ayer  
Marcie and Nathan Bachrach  
Christy Backley and Phil Crabtree  
Stephen and Susan Baggott  
Walter and Barbara Bailey  
Baird Foundation, Inc.  
Trish and Joe Baker  
Mr. and Mrs. Robert O. Banks  
Ms. Henrietta Barlag  
Bartlett Wealth Management  
Ron Bates and Randy Lasley  
Sandra Bauman  
William and Kate Baumann  
Rick Bachhuber, Jr. and Bettye Beaumont  
Ronald Beckemeyer  
Michael and Shelia Becker  
Dave and Gale Beckett  
Mark and Eileen Beckman  
Wayne and Barbara Beimesch  
Miss Martha L. Bell  
Mary Ann and Doug Bell  
Judith and Louis Belli  
Sue Benskin  
David and Marilyn Beran  
John A Berenberg  
Thomas and Kathy Bergman  
Pam and Jeff Bernstein  
Michael Berry and Melanie Garner  
Kenneth W. and Dawn H. Bertsche  
Sue and John Bever  
Mark and Lindsay Bibler  
David and Elaine Billmire  
Ed and Debbie Birk  
Bernice and Thomas Bishop  
Rodd and Carol Bixler  
Mr. and Mrs. Robert Blatt  
Ruth and Tom Bobenread  
Rick and Janet Bohne  
Sharon Kesterson Bollen  
Martha P. Bolognini  
Scott D. Booher and Angel M. Werling  
Neil K. Bortz Family  
Mr. Ethan Bowen  
Selena, James, and Justin Bowling  
Dr. and Mrs. Leo Bradley  
Douglas Brauch  
Thomas J. Breed  
Philip and Phyllis Breen  
M.C. Brennan  
Susan Brenner and Steven Mombach  
Hazeleen P. and J. Leland Brewster II\*  
Ms. Donna Broderick  
The Bob & Rita Driehaus Family  
Barbara and Neal Bronson  
Dale P. Brown and Lou Enzweiler  
Daniel Brown and Mark Haggard  
Jack G. and Rosemarie Brown  
Marian H. and Albert L. Brown, Jr.\*  
Mr. and Mrs. Ryan L. Brown  
Mrs. L.L. Browning, Jr.  
Dawn and Doug Bruestle  
Eric and Wendy Bruestle  
John and Peg Bruggeman

Laura and Paul Brunner  
Frederick and Patricia Bryan  
Clement and Ann Buenger Foundation  
Carol A. Buerger  
Jeff and Gay Bullock  
John and Dawson Bullock  
Douglas and Carol Burks  
Mr. John Burns  
Stephen and Diedra Burns  
Scott J. Burwinkel  
David Butler and Sara Butler, The Butler Family Charitable Fund  
Jack and Marti Butz  
John and Terri Byczkowski  
M. Cathleen Callies  
Bernie and Mary Kay Calonge  
Mr. and Mrs. Douglas Calton  
Mr. and Mrs. Ray Cardona  
Shannon and Bill Carey  
Wayne and Fran Carlisle  
Shannon and Lee Carter Family Fund\*  
Mr. and Mrs. James Cartledge  
Castellini Foundation/Robert S. Castellini  
Jo Ann Casuto  
Rosalind Chaiken  
Debbie Chamberlain  
Denise and Martin Chambers  
Kevin Chaney  
Ed and Nancy Ciarniello  
James Cissell  
The City of Cincinnati  
Leslie Clark  
Burton and Susan Closson  
Carl and Deborah Coburn  
John and Julie Cohen\*  
Lois and Philip Cohen\*  
Philip and Sheila Cohen\*  
Leland M. and Carol C. Cole  
William B Coleman and Maureen A Coleman  
George Colombel  
Marjorie E. Compton  
James P. Conway, Jr. and Richard D. Robertson  
Sheila M. Conway  
Sally and Rick Coomes  
Michael and Michele Cooney  
Robin Cotton and Cynthia Fitton  
Mr. and Mrs. Robert Coughlin  
Betsy and John Coutant  
The Crawford Family Foundation  
Dr. and Mrs. Joseph A. Creevy  
Brian Crellin  
John and Lisa Cronin  
David Crotty and Joan Von Handorf  
Tom and Amelia Crutcher  
Richard and Teddie Curry  
Jennifer and M. Vito Damiano  
Mark Dauner  
The David J. Joseph Company  
In Memory of Frank and Ruth Davis  
Kathy and Mike Davis  
Kenneth Davis  
Marjorie Davis\*  
Dawes direct, LLC  
Mark and Nancy Dawes  
Dr. Lois L. Deaton  
Nancy Decastro  
Kelly Dehan and Rick Staudigel  
Dr. and Mrs. Gregory DeLorenzo  
Deluxe Corporation Foundation  
Jim Denker and Mary McCarty  
Jan Denton  
Denton and Nick Denton  
Ms. Marilyn Derfus  
Designer Donations for Cincinnati Charities, Inc.  
Scott X. Deters  
Cathy and Michael DeWeirdt  
Diamond/Wolf Family  
Jackie Dieckman and Mike Camery  
William and Marifran Dirkes  
Michael and Kathleen Doherty  
Thomas Donnelly

Joan and Jeff Dornette  
Bethany and Denny Doverspike  
Barbara Doviak  
Kelley Downing  
Patricia and Timothy Doyle  
Peter Draugelis  
Emilie and David Driesler Fund\*  
The Bob & Rita Driehaus Family  
Don and Mary Dufek  
Duke Energy Foundation  
Saralou and Dave Durham  
John and Liz Dye  
Dr. Leslie Dye  
Peggy Eberhard and Jeff Hanna  
David and Kathy Eby  
Betty Easley Trust  
Allison Zent Edwards  
Stephen Einson and Patricia Fraley  
Ms. Joyce Elkus  
Bill and Sharon Emeigh  
Thomas J. Emery Memorial  
R and K Emery  
Allison Zent Edwards  
Stephen Einson and Patricia Fraley  
Ms. Joyce Elkus  
Bill and Sharon Emeigh  
Thomas J. Emery Memorial  
R and K Emery  
Ms. Karla Epperson  
Richard and Lisa Ernst  
Donald Beck and Dr. Lawrence E. Eynon  
Mr. and Mrs. William Faulkner  
Greg and Vickie Fehr  
Gerry and Meloney Feldkamp  
Matthew Feldman and Julie Baker  
Louis and Lisa Fender  
Mr. and Mrs. Richard Fiddes  
Fifth Third Foundation  
John Finocharo and Valerie Taylor  
First Financial Foundation  
Deborah and Thomas Fisher  
Mary and Bob Fitzpatrick  
Janice Flanagan and Bob Amott  
Sarah and Timothy Fogarty  
Micha and Bill Foglesong  
Gail F. Forberg  
Kathleen and Brue Forrester  
Missy and Brian J. Fox  
Pete and Betsy Frame  
Mr. and Mrs. John Freeman  
Stephen J. Fridrick  
Susan Friedlander  
Friends of the Playhouse  
David and Mindy Frimer  
William and Kathleen Fussinger  
Paul and Nancy Gaffney  
Larry and Diane Games  
Mary Ann Gardner  
Rodney and Vallie Geier  
Edward Gemperle  
General Electric  
Ms. Lisi Bryan George  
Howard and Sandra Gerber  
Timothy P. Gilday  
Mrs. Kathleen Glaser  
Mrs. Victoria Buyniski Gluckman and Dr. Jack Gluckman  
Donn Goebel and Cathy McLeod  
Eleanor and Richard Goering  
Martha K Goldbeck  
Peggy L. Golden and Kerry J. Klumpe  
The Goldhoff Family  
Sherry and Brett Goodson  
Clifford Goosmann and Andrea Wilson  
Sharon Gorman  
Keith and Karen Gossage  
Chandra and Mel Gravely  
Greater Cincinnati Foundation  
Carl and Joyce Greber  
Linda and Gary Greenberg\*  
Will Groneman and Maureen Flanagan  
Janet Gunn  
Barbara Anderson Guthridge\*  
Andrew and Melissa Hagenmaier  
Melissa M. Hagenmaier  
Carol Ann and Ralph V. Haile, Jr. Foundation  
Mr. David Hale

Mr. and Mrs. J. Joseph Hale, Jr.  
Carl and Margo Hall  
Christopher and Marti Hall  
Doug and Donna Hammond  
Jeanne and Richard Hannan  
Jeri and Daniel Hanus  
Mark Harlow  
Jim and Sally Harper  
Mrs. Suzanne Hasl  
Dr. and Mrs. Stan Hastings  
Teri and Mike Haught  
Charles Hayes and Katherine Kennedy  
Jeb and Nirvani Head  
Mrs. Louise A. Head  
Donald and Megan Heeb  
Brian and Helen Heekin  
Alan and Marion Heitner  
Dave and Betsy Hendy  
Mari Hengelbrok  
Susan and James Herman  
Bob and Marilyn Herring  
Michelle and Don Hershey  
Andrea and Dr. Edward Herzig  
Joseph and Susan Hickey  
Grace and Brian Hill  
Ms. Karlee L. Hilliard  
Dale Hodges and David F. Logan  
Sue Hoel  
Mr. Daniel Hoffheimer  
Mark and Cathy Hogan  
Karen and David Hoguet  
Stephen Holmes and Christy Kaeser  
Linda Holthaus and Richard Zincola  
Richard and Renita Homan  
Mary B. and William H. Hopple, III  
Terence L. and Christine W. Horan  
Mr. Peter Horton  
Joan Hoskins and Bob Nogg  
Erin E. Houlihan and John T. Bostick  
Michael and Carolyn Hoyt  
Marty and Tom Humes  
Huttenbauer Foundation  
Paul and Ruth Inderhees  
The Louise H. and David S. Ingalls Foundation  
Susan Ingmire and Lynn Hailey  
Maite Iraolagoitia  
Carl and Diane Iseman  
Mrs. Michele J Ittel  
Ellen and Garrett Jackson\*  
Bill and Mary Jane James  
Anne and Ted Jaroszewicz  
Larry and Jan Jeffers  
Robert Jennings  
The Andrew Jergens Foundation  
Linda Busken Jergens and Andrew MacAoidh Jergens  
John Wiley & Sons  
Donald and Peggy Johns  
Johnson Investment Counsel  
Janice and Randy Johnson  
The Morse and Betty Johnson Family Foundation  
Ronald Johnson and Kathleen Bok  
Wendy and Jeff Johnson  
Laurie F. Johnston  
Dr. Amy Johnstone  
Jones Family Fund\*  
Kyle and Sue Jones  
John and Nickie Kahle  
Dr. Toni and Rabbi Ken Kanter  
The Kaplan Foundation  
Marguerite Katchen  
Mr. Louis H. Katz  
Patti and Tom Keckeis\*  
Betsy and Geoff Keenan  
Dr. Robert Keith and Kathleen Thornton-Keith  
Barbara and Larry Keller  
Arleene Keller  
Estate of Susan Kellogg  
Roslynd Kendall  
Sharon Kerns  
Dr. and Mrs. Richard Kiarl



Elizabeth C. King  
Beverly Kinney and Ed Cloughessy  
Shelley Kirk  
Kathleen and Larry Kissel  
Mark and Nancy Kleespies  
David and Janice Klocke  
Lisa Knochelmann  
Austin E. Knowlton Foundation, Inc.  
Mr. Marvin P. Kolodzik  
Sandford and Nancy Kopnick  
Sally and Gerry Korkin  
Mark and Karen Kremzar  
Mr. and Mrs. Michael H. Kremzar  
Vicki and Jim Kroger  
Mr. and Mrs. Michael C. Krug  
Diane and Matthew Krumanaker  
Mr. and Mrs. Randolph L. Krumm  
Mr. Charles Kubicki  
Mark and Kimberly Kuenning  
Michael and Paula Kunka  
Dr. Jonathan and Gail Kushner  
Mr. and Mrs. John LaMacchia  
John and Susie Lane\*  
Bill and Evelyn Landrigan  
Judy and Laurence Laning  
Manuel and Karen Lancker  
Mr. Edward Lanzit  
Richard and Susan Lauf  
Mr. and Mrs. James K. L. Lawrence  
Bruce Lazarus and Phil Weintraub  
David and Jan Lazarus  
The Lemmerman Family  
Lempert Family  
Mr. and Mrs. James C. Leonard  
Carol Leslie  
Mr. and Mrs. Stephen S. Lett  
Mary Kay Levesay  
Mr. and Mrs. Patrick Limbach  
Jonathan and Nancy Lippincott  
Sherwin Little  
Sally A. Lloyd  
LKC Foundation  
James Lockey and Grace Lemasters  
Bonnie F. Loftspring  
Whitney and Phillip Long  
Margaret M. and Theodore F. Longshore  
Carole Lonneman  
Judy Lucas Family  
William Luerssen and Susan Small  
Betsy and Brian MacConnell  
Carol Ann MacGregor  
Jacqueline M. Mack and Dr. Edward B. Silberstein  
John and Mary Ann MacLeod  
Evelyn Mae Family Fund\*  
Craig and Anne Maier  
Paul and Suzie Maione  
Deborah and John Majoras  
Laurie Makoski  
Maly Family Fund\*  
Mark K. Mandell-Brown MD  
Mr. and Mrs. W. R. Manteuffel  
Ward and Ellen Maresca  
Charles and Jennifer Margolis  
Mariner Wealth Advisors  
James A. Markley, Jr.  
David L. Martin  
David and Tracey Martin  
Charles and Claire Martini  
Ron Matson and Daniel Young  
The Dean G. and Susan G. Matz Charitable Fund  
Dr. and Mrs. Sean McCauley  
David and Diane McClain  
Carolyn McCoy  
Mr. Kim and Mrs. Barbara McCracken  
Mary McCullough-Hudson and Greg Hudson  
Kevin and Erica McDonnell  
Jim and Dianne McEachen  
Dr. and Mrs. Paul McEnery  
Mark McKillip and Amira Beer  
Kevin and Frances McMurray  
Jeff and Debbie McNaul  
Kim and Jan McNeil  
Douglas and Patricia McPeck  
Charles and Joann Mead  
Chris and Amy Meininger  
Pattianne and Mark Menden  
Kathryn E. Merchant  
Messer Construction Co.  
Leon and Barb Meyer

Becky Miars  
Richard I. Michelman and Karen E. Meyer  
Mark and Kathy Millburg  
Fred and Robin Miller  
Millstone Fund  
Ms. Danute M. Miskinis  
Mr. Roy A. Mitchell  
Diane and Dave Moccia  
Marie and Tom Monaco Family Fund\*  
Monastery Event Center  
Jannelle Moore  
William J. and Mary G. Moran  
Dennis and Amy Morand  
Ms. Vivian Morgan  
Arthur C. Morrissey and Janet M. Hayes  
W. Stanley and Mary W. Morton  
Dean and Catherine Moulas  
Nora Moushey  
John and Lorna Muhlhauser  
Martha Mullin  
George and Kay Murphy  
Dr. and Mrs. Charles Myer, III  
Patti Myers and Alan Flaherty  
Ken and Nancy Natorp  
Eleanor D. Nelson  
Ms. Meghan Sullivan Nelson  
Kathy Neus and John Fox  
Valerie Newell and Timothy Smith  
Bill and Karen Neyer\*  
George Nielsen  
Louis and Louise Nippert Charitable Foundation  
Dr. James Nordlund  
Northmarq - Susan Branscome  
Andrew J. Nuckols  
Diana and Rick Oberschmidt  
Carol and Mike O'Brien  
Neil and Virginia O'Connor  
State of Ohio  
Ohio National Foundation  
Ohio Valley Foundation, Fifth Third Bank, Agent  
Ms. Mary Cathey Olberding  
Randall D. and Marianne Olson  
Robert and Carol Olson  
Jack and Marilyn Osborn  
Kenneth C. Oswald and Mary Beth Martin  
Theodore Otte  
Charlotte and Robert Otto  
Kir and Jack Overbeck  
Tom and Linda Palmer  
Donna and Greg Park  
Carl Parrott and Molly Katz Fund\*  
Barb and Al Pearlman  
Linda and Michael Peitz  
Rita and David Perkins  
David and Nancy Peters  
Dan and Sue Peterson  
Stephen Peterson and Christopher Bolling  
Susan and Daniel Pfau  
Paul and Janet Phillips  
Si and Laura Pitstick Giving Fund  
Osman and Suna Polat  
Mr. and Mrs. Don Popelar  
Sharon and Stephen Poppe  
Wym and Jan Portman\*  
Jennifer and David Powell  
Terry Powell  
Stuart and Ildiko Pray  
Marcy Prebeg  
William and Mary Beth Price  
Betty L. Prince  
Procter & Gamble  
Prudential - Matching Fund  
Leo Pulte  
John and Kathy Qualls  
Michelle Ramsey  
Gerald D. Rape  
Mitch and Karen Rashkin  
Mary and Ranjit Rath  
Marjorie and Louis Rauh  
Kathy Regruth  
Rob and Gretchen Reifsnnyder  
Pamela and Dick Reis  
Don and June Reynolds  
Alison and Rob Rice  
Lyle and Jean Ritze  
Robert W. Baird & Co. Incorporated  
Joan and Bill Roberts  
Blake Robison and Connan Morrissey  
Sylvia Robison

Diane Rohs  
Raymond and Nancy Rolwing  
The Roselle Foundation  
John and Amy Rosenberg Family Fund  
The Rosenthal Family Foundation  
Bruce and Bettina Ross  
Moe and Jack Rouse  
Susan Abrahamson Routh and Jeffrey Routh Family\*  
William S. Rowe Foundation  
Jack and Mary Bob Rubenstein  
Barb and Rich Ruddy  
Peter Ruehlman  
Mr. Richard H. Russell  
Don and Victoria Ryan  
David Sammons  
Robert and Dell Ann Sathe  
Mr. and Mrs. David Savage, Jr.  
Susan and Clint Schertzer  
Robert and Adele Schiff Family Foundation  
Karen Maitland Schilling  
Martha and Lee Schimberg  
Rosemary and Mark Schlachter  
Jacob G. Schmidlapp Trusts, Fifth Third Bank, Trustee  
Ms. Kitty Hawley Schmidt  
Michael and Natalie Schoeny  
Roger and Glenda Schorr\*  
The Harold C. Schott Foundation  
Carol J. Schroeder  
The John A. Schroth Family Charitable Trust, PNC Bank, Trustee  
Digi and Mike Schueler  
Janet Schultz and Russell Lascelles  
Abby and David Schwartz  
Theodore and Debra Schwartz\*  
Mr. and Mrs. Wilbert Schwartz  
Dr. P. Robert Schwetschenau  
David and Martha Seagram  
Linda Sears  
Robert and Valla Sears  
Ladislav and Vilma Segoe Family Foundation  
Teri Seippel and Debra Johnson  
William and Sandra Selvey  
The Louise Taft Semple Foundation  
Lauren Hannan Shafer  
Mr. and Mrs. Kevin Shea  
Christopher and Jeanne Sheldon Charitable Fund  
Kathy Shell and Joetta Prost  
Thomas and Nancy Shepherd  
John L. Shields  
Paul Shortt  
Glenn and Sue Showers  
Betsy and Jerry Shroat  
Mr. and Mrs. Charles Shuford  
Ivan and Karen Silverman  
Melinda and Irwin Simon  
Mr. Jeremy F. Simpson  
Ann M. Simsic  
Robert and Linda Singer  
Mary Lee and Louie Sirkin  
Elizabeth C. B. and Paul G. Sittenfeld  
Dr. and Mrs. Bradbury A. Skidmore  
Ms. Norma Skoog  
Rick and Cathy Slack  
Jack and Barbara Smith  
Mr. and Mrs. Stephen Smith  
Mr. Steven Smith and Mr. David Vanderpool  
Susan and David Smith  
Ellen Pease and V. Clark Sole, Jr. Family Fund\*  
Carol and Harry Sparks  
JoAnn Stamper  
Joseph and Linda Staneck  
Joseph and Kathleen Statt  
Katherine and Tim Stautberg  
Kurt and Susan Stedje  
John and Jennifer Stein  
Steiner Family  
Paula Steiner  
Phil and Berni Stephenson  
Robert D. Stern Fund\*  
Mr. and Mrs. Ronald Stern  
Jane M. Stewart  
John and Merrie Stillpass  
Larry and Donna Stinson  
Bette and Jack Stiith  
Arnold and Stephanie Stoller  
Elizabeth A. Stone\*  
Logan and Donna Stone  
Nancy and Gary Strassel

Bill and Nina Strauss  
Gerrit Strauss  
Dr. Susan R. Strick  
Linnell and Paul Sullivan  
Stuart and Terry Susskind  
The Sutphin Family Foundation  
Millie Swaine  
Ann L. Swanson  
Lora and Scott Swedberg  
Dudley and Tina Taft  
Jennifer and Woody Taft  
Dr. Alan and Shelley Tarshis  
Robert D. Temple and Sue E. Auerbach  
Lawrence and Jan Tepe  
Carlos and Roberta Teran  
Ms. Marty Thaler  
Carol Thaman  
Dave and Heidi Thiem  
Morley and Brenda Thompson  
Mr. and Mrs. Joseph Thorpe  
Mary and Mitch Thurman  
Mr. and Mrs. Scott Tiede  
Michael J. Tiller  
Marty C. Tomb  
Ann Marie Tracey and Daniel Buckley  
Valerie and Mike Trentman  
TriVersity Construction Company  
Dionn Tron  
Trust Foundation  
Daman and Barbara Turner  
Gloria Uziel and Patrick Shea, M.D.  
Linda Vaccariello and Eric Burgmann  
John Vago and Joan Luppino  
Catherine and Jim Valentine  
Ellen and Ray van der Horst  
Rosalie P. van Nuis  
John and Amy Vennemeyer  
Lawrence and Maureen Vignola  
Christopher and Nancy Virgulak  
Alex von Rosenberg  
Margaret and Albert Vontz III\*  
Jeffrey and Marcia Vorholt  
Nancy Wade  
Randolph Wadsworth  
Mr. and Mrs. Elmer Wahl  
Daniel G. Walker and Lisa Capurro  
Waltek and Company LTD  
Sarela Walton  
Buzz Ward  
Richard and Jill Warman  
David and Ginger Warner  
Dr. and Mrs. Galen R. Warren  
Dr. and Mrs. Nelson B. Watts  
Mrs. Arthur D. Weber  
Marcia and Richard Weiland  
Barbara and Irwin Weinberg Fund\*  
Don and Sandy Weinkam  
Alan Weinstein  
Donna Welch  
Jane S. Welling  
Ms. Janet K. Wendel  
Edward Wertheimer  
Julia Wesselkamper and Julian Johnson  
Mr. and Mrs. David Westerbeck  
Sallie Westheimer and Greg Rhodes  
Barbara Weyand  
Amanda and Tom White  
Kurt and Jean Whitford  
Leo Whitt and Xia Wang  
Jo Ann Wieghaus  
Ann Westheimer and Peter Williams  
Chris and Diane Williams  
Mauri J Willis  
Ronna and Dr. James B. Willis  
Jill and Steve Wilson  
Richard V. and Carol A. Wilson\*  
Robert and Judy Wilson  
Peg Wolfe  
Anne Marie Wolfer  
Connie and Alan Wolfson  
Margaret and John H. Wyant  
John M. Yacher  
Steve and Cindy Young  
Susan and Don Zaunbrecher  
Alison and Jim Zimmerman  
David and Suzanne Zimmerman  
Richard Zinicola  
Anne and Allen Zobay  
Phil and Debbie Zorn  
Mr. and Mrs. George Zuefle

# DONOR LIST 2020-21 FISCAL YEAR

## THANK YOU FOR YOUR SUPPORT

This list includes all gifts given to the Playhouse from June 1, 2020 to July 30, 2021, not including endowment and Capital Campaign gifts.

### AUDIENCE

ArtsWave  
Hamilton County  
Mr. Edward Lanzit  
The Ohio Arts Council  
Moe and Jack Rouse  
Robert and Adele Schiff Family Foundation  
The Schueler Group  
The Shubert Foundation

### PLAYWRIGHT

The Charles H. Dater Foundation  
Arnold and Gloria Morelli  
Mr. Charles L. Thomas, Jr.

### PRODUCER

Mrs. L.L. Browning, Jr.  
Chemed Foundation  
Carol Ann and Ralph V. Haile, Jr. Foundation  
Austin E. Knowlton Foundation, Inc.  
Terry Lemmerman  
Becky Miars  
Barbara and Irwin Weinberg Fund\*

### DIRECTOR

Anonymous  
Ruth and Tom Bobenread  
Robert S. Castellini  
Linda and Gary Greenberg\*  
Linda Busken Jergens and Andrew MacAoidh Jergens  
Macy's  
Charles and Joann Mead  
Leon and Barb Meyer  
The Procter & Gamble Fund\*  
The John A. Schroth Family Charitable Trust,  
PNC Bank, Trustee  
Digi and Mike Schueler  
Betsy and Jerry Shroat  
John and Jennifer Stein  
Nellie Leaman Taft Foundation  
Estate of Carol Thaman  
Ellen and Ray van der Horst

### STAGE MANAGER

Jeb and Nirvani Head  
Jennifer and Woody Taft

### SET DESIGNER

Ron Bates and Randy Lasley  
William J. Baude and Maurice E. Oshry Fund\*  
Mark and Lindsay Bibler  
David and Elaine Billmire  
Denise and Martin Chambers  
Mr. and Mrs. David Ellis, III  
Elizabeth George  
Peggy L. Golden and Kerry J. Klumpe  
Mrs. Suzanne Hasl  
Mrs. Andrea and Dr. Edward Herzog  
Susan Ingmire  
Bill and Mary Jane James  
Patti and Tom Keckeis\*  
Marilyn Kinne  
Mr. and Mrs. Michael H. Kremzar  
Mr. and Mrs. James C. Leonard  
Mr. and Mrs. Stephen S. Lett  
Jacqueline M. Mack and Dr. Edward B. Silberstein  
Craig and Anne Maier  
Deborah and John Majoras  
Barbara and Kim McCracken  
McDonald Family Foundation  
Rob and Alexandra McDonald  
Kevin and Frances McMurray  
Patti Myers and Alan Flaherty  
Jack and Marilyn Osborn\*  
Sara Phillips  
Jenny and David Powell  
Matt Reckman  
Don and June Reynolds  
Amy and John Rosenberg

Louis and Melba Schott Foundation  
The Louise Taft Semple Foundation  
Elizabeth C. B. and Paul G. Sittenfeld  
Marty Tomb  
Barbara and Daman Turner  
Lawrence and Maureen Vignola  
Vista Foundation  
Margaret and Albert Vontz III\*  
Richard and Jill Warman  
Susan Whitman  
Leo Whitt and Xia Wang  
Ronna and Dr. James B. Willis  
The Wohlgemuth Herschede Foundation

### COSTUME DESIGNER

Mono Bhattacharya  
Douglas Brauch  
Mr. and Mrs. Ryan L. Brown  
Terri and John Byczkowski  
James P. Conway, Jr. and Richard D. Robertson  
The Crawford Family Foundation  
Richard and Renita Homan  
Ms. Holly Huttenbauer  
Johnson Investment Counsel  
Marvin Kolodzik  
Dean and Catherine Moulas  
Ohio Development Services Agency  
Stuart and Ildiko Pray  
Prudential - Matching Fund  
Rob and Gretchen Reifsnnyder  
Ellen Rieveschl  
RKCA  
Joseph B. Steiner  
U.S. Bank  
Jo Ann Wieghaus  
Anthony and Sally Woodward  
Susan and Don Zaunbrecher

### LIGHTING DESIGNER

Anonymous (3)  
Americana Arts Foundation  
William P. Anderson Foundation  
Susan Anthony  
Eric and Brenda Armstrong Family Fund\*  
Albert Arthur  
Janet G. Banks  
Peggy Barrett  
Jan Bartel  
Mary Ann and Doug Bell  
Mr. and Mrs. Robert Blatt  
Randal Bloch  
Jane and Gary Booth  
Mr. and Mrs. Ken Borisch  
Thomas J. Breed  
John and Peg Bruggeman  
Ms. Faith Bryan  
Jackie and Gary Bryson  
Eileen Budo  
Ron Bunt and Wei Sun  
Eric Burgmann and Linda Vaccariello  
Bonnie and Dick Buten  
Candace Carson  
Philip Clayton  
Burton and Susan Closson  
Mr. Rick Coffey  
Mr. and Mrs. Wilbur Cohen  
Pearl J. Compaan, M.D.  
The Cord Foundation  
Kassy Corken  
Ms. Susan Cummings  
Kenneth Davis  
Nancy and Mark Dawes  
Kelly Dehan  
Designer Donations for Cincinnati Charities Inc.  
Scott X. Deters  
Florence and Thomas DeWitt  
Peter Draugelis  
Louis A. and Lisa K. Fender  
Sarah and Grayson Fitzhugh

Paul and Nancy Gaffney  
GE Aviation  
Richard and Kathleen Glaser  
Clifford Goosmann and Andrea Wilson  
Gradison Foundation  
Greater Cincinnati Foundation  
Jeanne and Richard Hannan  
Betsy and Dave Hendy  
Ms. Karlee L. Hilliard  
Hixson Architects Engineers Interiors  
Mr. Peter Horton  
Carolyn and Michael Hoyt  
Huttenbauer Foundation  
Ms. Lindsey Huttenbauer  
Mary E. Ivers  
Ellen and Garrett Jackson\*  
Johnson & Johnson - Matching Fund  
Wendy and Jeff Johnson  
James and Brenda Jones  
Mr. and Mrs. Geoffrey Keenan  
Dr. Robert Keith and Kathleen Thornton-Keith  
Barbara and Larry Kellar\*  
Robert A. and Marian K. Kennedy Charitable Trust  
Judith Kenniston  
Margo Kirstein  
Lynn Keniston Klahm  
Kroner Dry Cleaners  
Kathleen B. and Michael C. Krug\*  
Denise and John Kuprionis  
Jo Ann and George Kurz  
Donna Lilley  
Sally A. Lloyd  
Whitney and Phillip Long  
David Martin  
Ms. Margaret E. Mathile  
Jill Mitchell  
Mr. Roy A. Mitchell  
Mary G. Moran  
Karen Neyer  
Michael Nordlund and Lisa Lee  
Randy and Marianne Olson  
Charlotte and Robert Otto  
Melissa and John Panzeca  
Carl Parrott and Molly Katz Fund\*  
Julia Pentecost  
Phillips Family Fund\*  
Anne Pierce  
Mrs. Jan V. Portman  
Ms. Jane Portman  
Terry Powell  
Betty Prince  
Gerald D. Rape  
Mr. and Mrs. Gates T. Richards  
Charles Scott Riley III Foundation  
Brenda Rolf  
Jim Rubenstein and Bernadette Unger  
Bill and Diane Rumpke, Jr.  
Ann Saluke and Don Yelton  
Glenn and Kitty Schaaf  
Austin Schiff  
Rosemary Schlachter  
Pat and Paul Schlecht  
Scripps Howard Foundation  
John L. Shields  
Mr. and Mrs. Irwin Simon  
Gerald and Sarah Skidmore  
Mr. and Mrs. Stephen Smith  
Susan and David Smith  
Tom and Dee Stegman  
Ms. Beth Sullivan  
Amy and Bill Thaman  
Ellie and Michael Vandermolen  
Larry Weber  
Dr. and Mrs. Alan Weinstein  
Mrs. Horst P.G. Westerling  
Barbara Weyand  
Linda Young

### ACTOR

Anonymous (6)  
Liz and Hank Alexander  
James H. and Frances R. Allen  
Debra Hust Allison  
Bob Amott and Janice Flanagan  
Elizabeth C. Armitage  
Susan Arnold  
Molly Barber  
Mandy Bartel  
Kate and Bill Baumann  
Rebecca Beckstedt  
Miss Martha L. Bell  
John Berninger  
Michael Berry and Melanie Garner  
Stephanie Besl  
The Blackley Family  
Bodenburg Family Giving Fund  
Sandra Bolek  
Holly P. Bortz  
Tom Brennan  
Linda D. Brink  
Ms. Lisa Broun  
Dr. Jane Brown and Mr. Paul Beck  
Jeff and Gay Bullock  
Donald L. and Kathleen F. Burns  
Sara M. Butler  
Mark T. Byron  
Jane and Frank Caccamo  
Mary Ellen Cody  
Coker Group  
Cynthia Cole  
Marjorie Compton  
Mr. and Mrs. David Cook  
Jeanne Coughlin  
Mrs. Martha S. Crafts  
Amelia Crutcher  
Anne Dagenbach  
Judy S. Dalambakis  
Kathy and Mike Davis  
Judith de Luce  
Carol DeGreg  
Debora Del Valle  
Mr. Albert C. Dierckes, Jr.  
Thomas Donnelly  
Emilie and David Dressler Fund\*  
Laurie and Dan Eggemeier  
Mr. Kenneth Fischer  
Ms. Sharon Fiscus  
Ora Forusz  
John and Susan Frank  
Sharon Freyhof  
Frost Brown Todd LLC  
Gene Fugate  
Kathleen Gibboney  
Nancy Gollobin  
Tom Gougeon  
Carl and Joyce Greber  
Margo Hall  
Al and Pat Harmann  
Louise Head  
Camille K. Healy  
Carolyn Heck  
Gwen and John Heilbrun  
Mrs. Anne P. Heldman\*  
Fred and Patti Heldman\*  
Judy Tondi Herd  
Dr. James and Ms. Susan Herman  
Dale Hodges and David F. Logan  
Mrs. Kyle Hodgkins  
Cathy Hogan  
Mark and Deanna Hollon  
Stephen Holmes and Christy Kaeser  
Linda R. Holthaus  
Dr. and Mrs. Edmond Hooker  
Noel and Angela Horne  
Debra E. Howie  
Amy Hughes



Marty Humes  
Pat Humphrey  
Maite Iraolagoitia  
Diane Iseman  
J. McLaughlin  
Jennifer Jackson  
Anne Jaroszewicz  
Nathan and Vanessa Jenkin  
Carrie Johnson  
Sarah Raup Johnson  
Amy J. Katz  
Matthew Kelly  
Mr. Stratos Kranias  
Heather Krombolz  
Lynn Larson  
Richard and Susan Lauf  
Connie Cook Laug  
Nancy Lippincott  
Janet Longacre  
John and Mary Ann MacLeod  
Carolyn Ott Martin  
Nancy Martin  
Bradley Mathis  
Doug and Jeff McPeck and Nottinghamill  
Investment Advisers  
Mary Ann Meanwell  
Richard I. Michelman and Karen E. Meyer  
Audrey Miller  
Ms. Danute M. Miskinis  
Diane Moccia  
Abby Moran  
Maura Moran-Berry  
Connan Morrissey  
Jennifer Mottier  
Scott and Barb Muhlhauser  
Jeannie Niebuhr  
James Nordlund  
Mr. and Mrs. Timothy Oppelt  
Kenneth C. Oswald and Mary Beth Martin  
Mr. and Mrs. Daniel Pardekooper  
Dr. and Mrs. Richard Park  
Mr. Troy Parker  
Claire Patterson  
Alice Perlman  
Jeff and Diane Pfaff  
Mr. and Mrs. Don Popelar  
Douglas and Julie Prince  
Kathy Qualls  
Marjorie Rauh  
Mary and Andrew Redington  
Pamela Reising  
Ms. Sherri Remaklus  
Margie Rennie  
Alison and Rob Rice  
Mrs. Deborah White Richardson  
Buffie Rixey  
Mary Ellen Roberts  
Nancy Robinson  
Dr. Raymond H. Rolwing and Nancy Perry  
Margo Ross  
Rita and Roger Ross  
Rich and Barb Ruddy  
Mr. Richard H. Russell  
Robin Russo  
David and Judy Savage  
Mr. Edward Sawyer, Jr.  
Martha and Lee Schimberg  
Roger and Glenda Schorr\*  
Mary D. Schweitzer  
Recie and Jim Scott  
Lauren Hannan Shafer  
Patricia Sheppard  
Sue Showers  
Karen and Ivan Silverman  
Robin and Murray Sinclair  
Laura Skidmore  
Terri Skidmore  
Adrienne Angst Smith  
Sandra and Henry Spitz  
Paula Steiner  
Stephanie and Joseph Stitt  
Elizabeth A. Stone\*  
Dr. Susan R. Strick  
Carol and Ted Striker  
Glenda Suttman  
Ms. Kazue Takeuchi  
Tom and Keri Tami  
Ms. Teresa Telford  
Dr. Jan Tepe, D.D.S.

Sally Tieke  
Ms. Catharina Toltzis  
Ms. Dionn Tron  
Susie Tweddell  
Doug and Molly Tyger  
Maureen Valentine  
Nancy Virgulak  
Liz and Dave Wallingford  
Dr. and Mrs. Galen R. Warren  
Bettie Watts  
Dr. and Mrs. Barry W. Webb  
Jane Welling  
Robert L. and Judy A. Wilson, Jr.  
Susan and Dean Windgassen  
Tim and Leslie Worcester  
Marsha and Robert Wuerdeman  
John M. Yacher  
David and Cynthia Zink  
Jeff Zipkin

#### **STAGEHAND**

Anonymous (8)  
Ms. Kathryn Al-Lamadani  
Lisa Allgood  
Mr. and Mrs. R. Bruce Anderson  
Ted E. Bear  
Mariana Belvedere and Samer Hasan  
Michael and Kathleen Benken  
Harvey and Thelma Bergman  
Barbara and Milton Berner  
Bradley R. Bevington  
Walter B. Blair  
Patricia Bogart  
Dr. Samuel Brewer and Dr. Carole Stokes-  
Brewer  
Charlotte Brooks  
Harva Cope  
Susan Cranley  
Mr. and Mrs. Scott Cruse  
Ms. Elizabeth Dale  
Daunielle Rasmussen's Friend  
Mr. Frank Davis  
Design To Market Home Staging  
Duke Energy Foundation  
Mr. and Mrs. David Duke  
Mr. Cameron Ehteshami  
Mr. Robert C. Fee  
Ms. Allison Finley  
James K. and Susan A. Fitton  
Maureen Flanagan and Will Groneman  
Kathleen Forrester  
Joy and Bill Fotsch  
Carolyn and Terry Fox  
Ms. Susan Fox  
Shirley Gallagher  
Susanne E. Geier  
Sharon and Dennis Geiger  
General Electric  
Debra Gilman  
Dr. and Mrs. Samuel Greengus  
Margaret E. Hagar  
Mary and Phil Hagner  
Ham and Ellie Hamilton  
Albert C. Heimert  
Mr. and Mrs. W. Hensel, Jr.  
Ms. Sherrie Heyse  
David and Elizabeth Himes  
Mr. and Mrs. Daniel J. Hoffheimer  
Nancy Hollingsworth  
Dr. Carol Hubbard  
Mr. Arthur Hughes  
Drs. Linda and Gordon Huntress  
IBM Corporation  
Dr. Amy Johnstone  
Barbara and Mike Kelly  
Mr. and Mrs. Lyle Kelly  
Paul J. and Carolyn G. Kemper  
Tom and Sharon Kidd  
Judy Kraus  
Shirley and Michael Krieger  
Mr. and Mrs. Randolph L. Krumm  
Mark and Elisabeth Kuhlman  
Michael and Paula Kunka  
Bill and Evelyn Landrigan  
Shawna K. Langworthy  
Dr. Carol P Leslie  
Herschell Levine  
Sherwin Little  
Lupe Lopez  
Desiree Loveless

Ralph and Fran Lowenstein  
Kay Lynch and Chuck Beckman  
Dave and Lee MacKenzie  
Charles and Jennifer Margolis  
Randy Marker  
Patricia Mascaritola  
David Mason  
Kent Mathias  
Ron Matson and Dan Young  
Eunice McAleer  
Ms. Nancy McBreen  
Mr. and Mrs. Michael S. McGraw  
Richard and Rhoda Meyer  
Roger and Mary Ann Meyer  
Lori and Jeff Miller  
Wayne Miller  
Mr. Jerry Morgan  
Steve Murphy  
Patricia Musgrove  
Andrew J. Nuckols  
Diane Oestreicher  
J. Brett Offenberger and Douglas Duckett  
Carol and Robert Olson  
Kit and Jack Overbeck  
Alice and Wilson Palmer  
Mr. Robert Pellegrino  
Mr. and Mrs. Roger Perna  
David Piatt Fund\*  
Les and Molly Polasky  
Nancy and Bruce Prewitt  
Phil and Susan Price  
Ruth Quinn  
Judith Recker  
Mr. and Mrs. Kenneth Revelson  
Shirma Revelson  
Brian and Mary Rhame  
Craig and Sue Richmond  
George and Phyllis Robertson  
Steve Rogers  
Diane Rohs  
Josie and Tony Russo  
Michael and Christine Ryan  
Mark and Jan Sass  
Bernhard Schiefer  
Robert and Kelly Schiller  
Timothy and Jeannie Schoonover  
Dr. and Mrs. L.J. Schott  
Chris Schulte  
David and Abby Schwartz  
William and Sandra Selvey  
Mary Lee and Louie Sirkin  
Brian Skale  
Jack and Barbara Smith  
Steelcase Foundation - Matching Fund  
Ms. Amy Stier  
Ms. Margaret Story  
John Strawser  
Kendra L. Struthers  
Dr. Alan and Shelley Tarshis  
Robert D. Temple and Sue E. Auerbach  
Carlos and Roberta Teran  
Morley and Brenda Thompson  
Janet G. Todd  
Torey and Tom Torre  
Sarella Walton  
Mrs. Paul H. Ward  
Mr. Greg Weckenbrock  
Brendan and Julie White  
Richard Wiese  
Rev. Anne Warrington Wilson  
Mrs. Joan R. Wilson  
Christine Wolf  
Daniel and Jessica Woo  
Bob and Sandie Wubbolding  
Dr. Linda Wulff  
Janet Ziegler

*\*Denotes a fund of the Greater  
Cincinnati Foundation*

# ARTSWAVE 2021 CORPORATE PARTNERS



Cincinnati Playhouse in the Park acknowledges the following Partner Companies, Foundations and their employees who generously participate in the Annual ArtsWave Community Campaign at the \$100,000+ level. Your support helps make our community vibrant and connects people across our region through the arts. Thank you!

**P&G**

**FIFTH THIRD BANK AND THE FIFTH THIRD FOUNDATION**

**GE AVIATION**

**CINCINNATI BELL**

**WESTERN & SOUTHERN FINANCIAL GROUP**

**CINCINNATI CHILDREN'S HOSPITAL MEDICAL CENTER**

**THE CINCINNATI INSURANCE COMPANIES**

**CITY OF CINCINNATI**

**ENQUIRER MEDIA**

**GREAT AMERICAN INSURANCE GROUP**

**OHIO NATIONAL FINANCIAL SERVICES**

**U.S. BANK**

**THE H.B., E.W. AND F. R. LUTHER CHARITABLE FOUNDATION, FIFTH  
THIRD BANK AND NARLEY L. HALEY, CO-TRUSTEES**

**MACY'S**

**CINCINNATI BUSINESS COURIER**

**THE KROGER CO.**

**PNC**

**THE E.W. SCRIPPS COMPANY AND SCRIPPS HOWARD FOUNDATION**

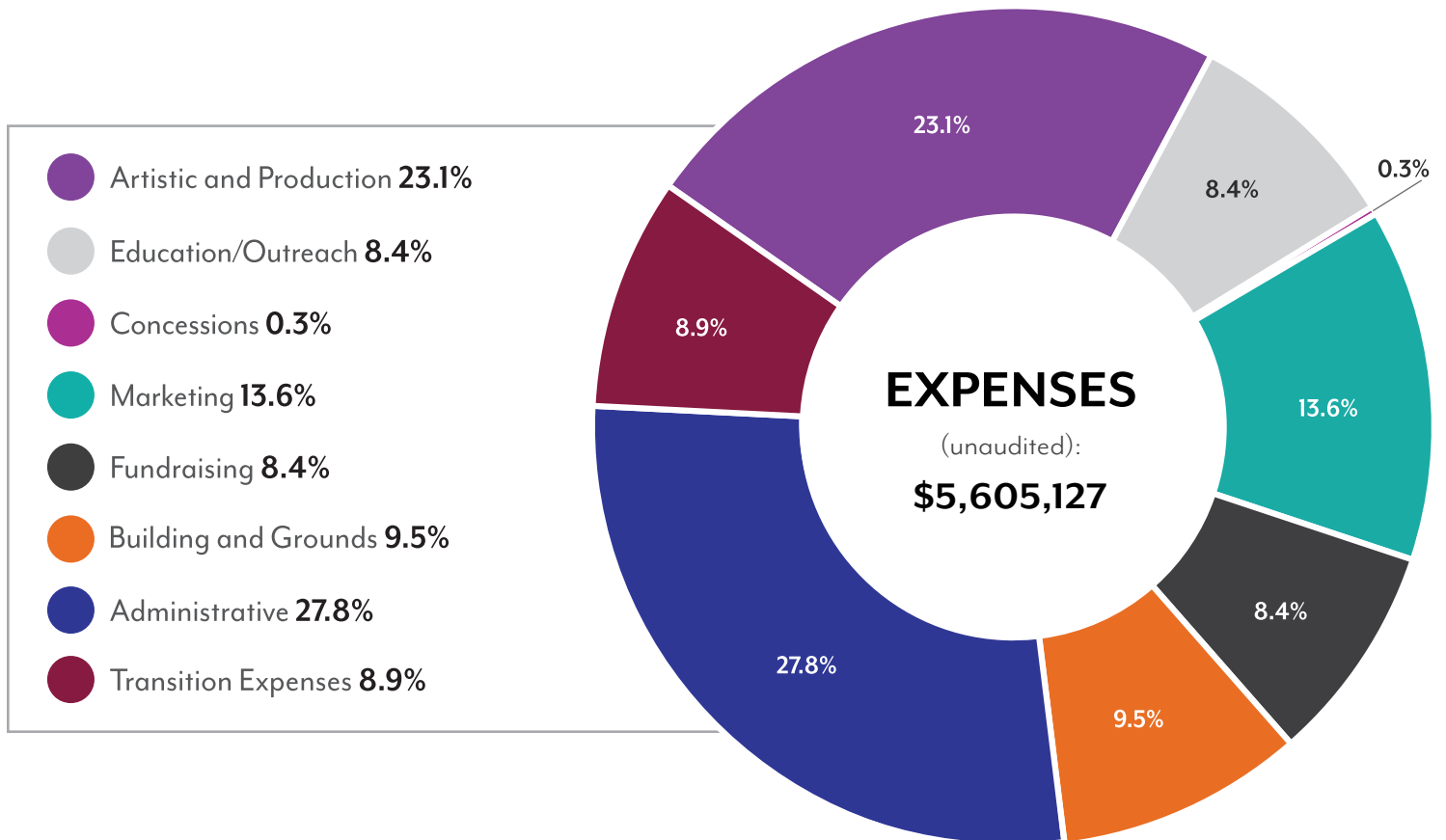
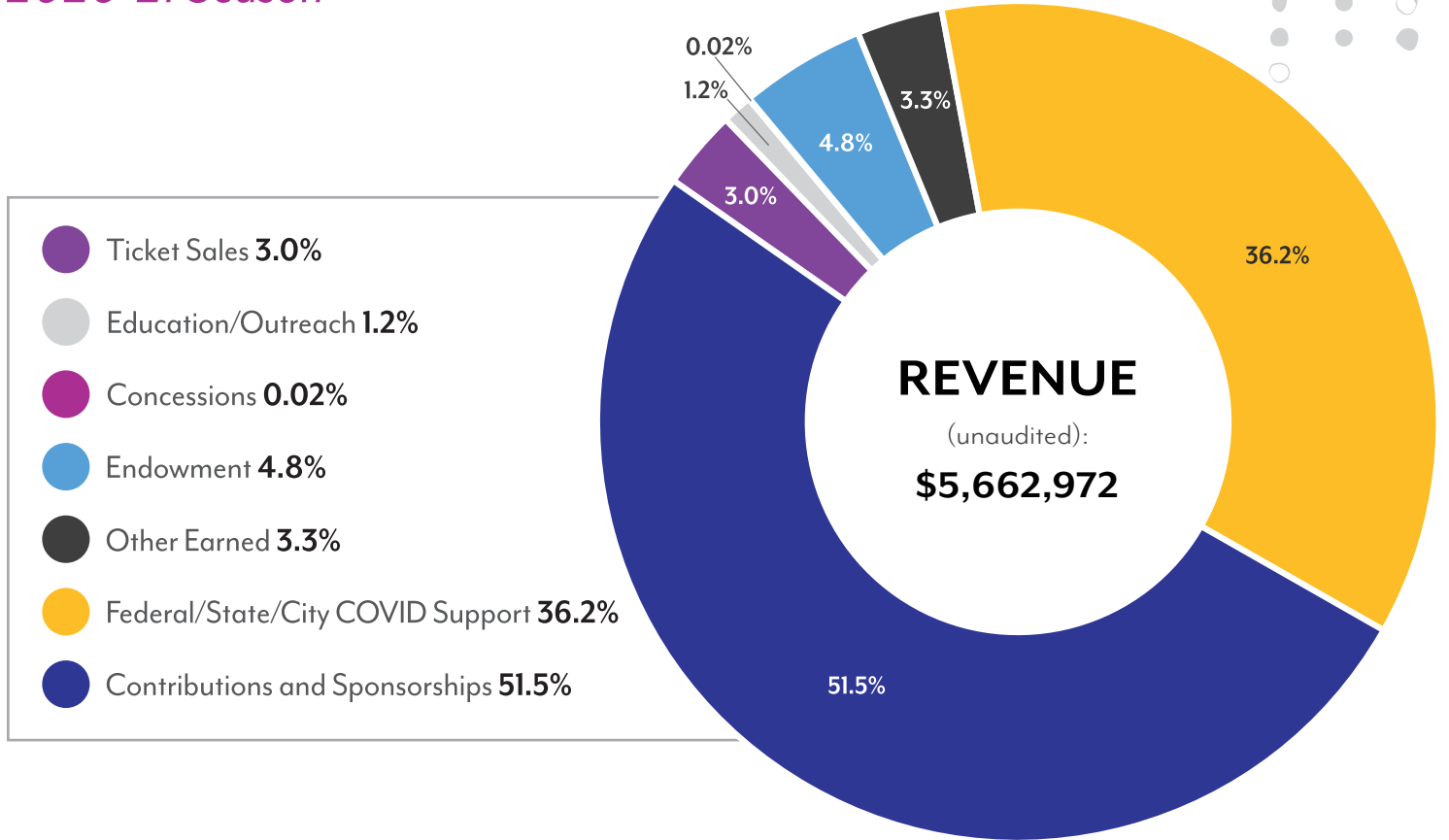
**DUKE ENERGY**

**HORAN**

**CINCINNATI REDS**

# FINANCIAL REPORT

2020-21 Season



Visit [CINCYPLAY.COM](http://CINCYPLAY.COM)



Box Office: 513-421-3888

Administrative Offices: 513-345-2242

Address: 962 Mt. Adams Circle, Cincinnati, Ohio 45202